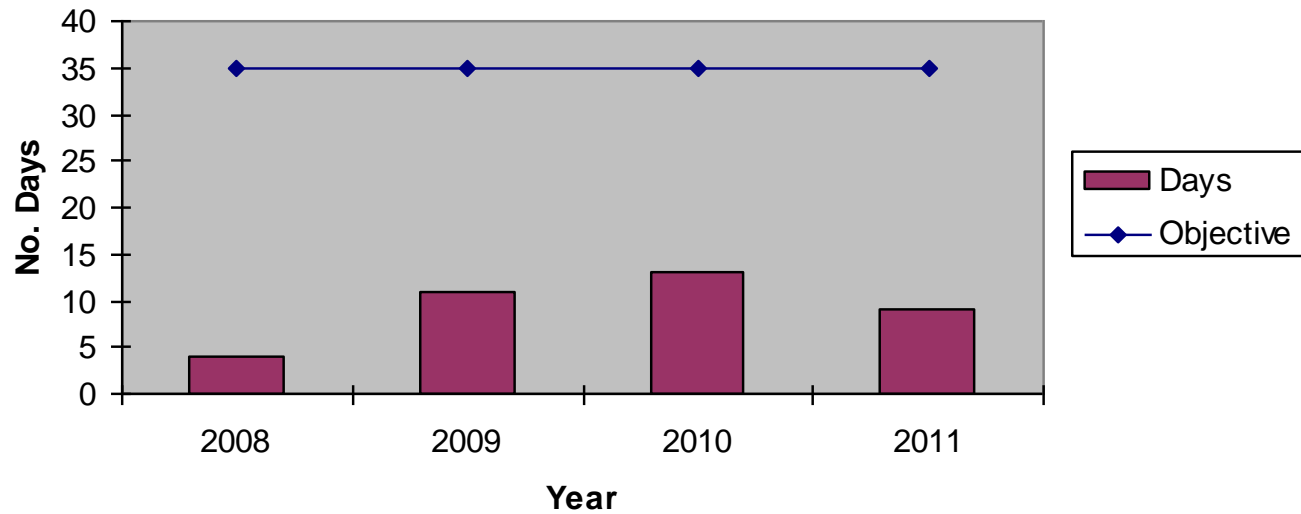


South Ferriby Liaison October 2011

North Lincolnshire Council Air
Quality Report

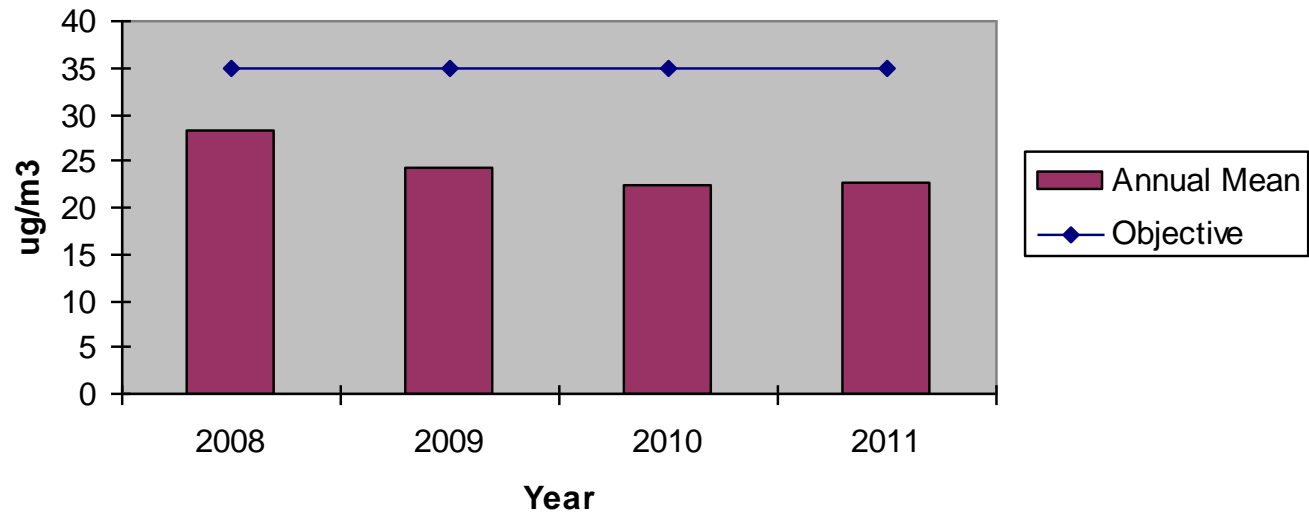


South Ferriby PM10 Daily Mean Exceedances



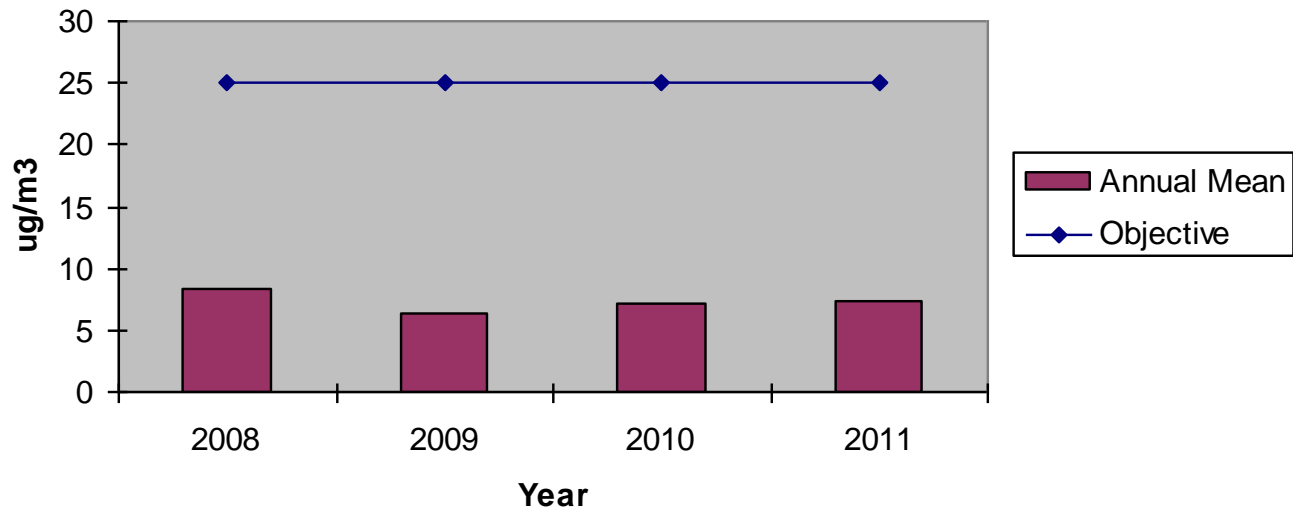
Year	PM ₁₀ Objective	Result (days)	Compliant
2008 (from 17/11)	<35 daily means of $50\mu\text{g}/\text{m}^3$	4 days	✓
2009	<35 daily means of $50\mu\text{g}/\text{m}^3$	11 days	✓
2010	<35 daily means of $50\mu\text{g}/\text{m}^3$	13 days	✓
2011 (until 17/11)	<35 daily means of $50\mu\text{g}/\text{m}^3$	9 days	✓

South Ferriby PM10 Annual Mean Objective



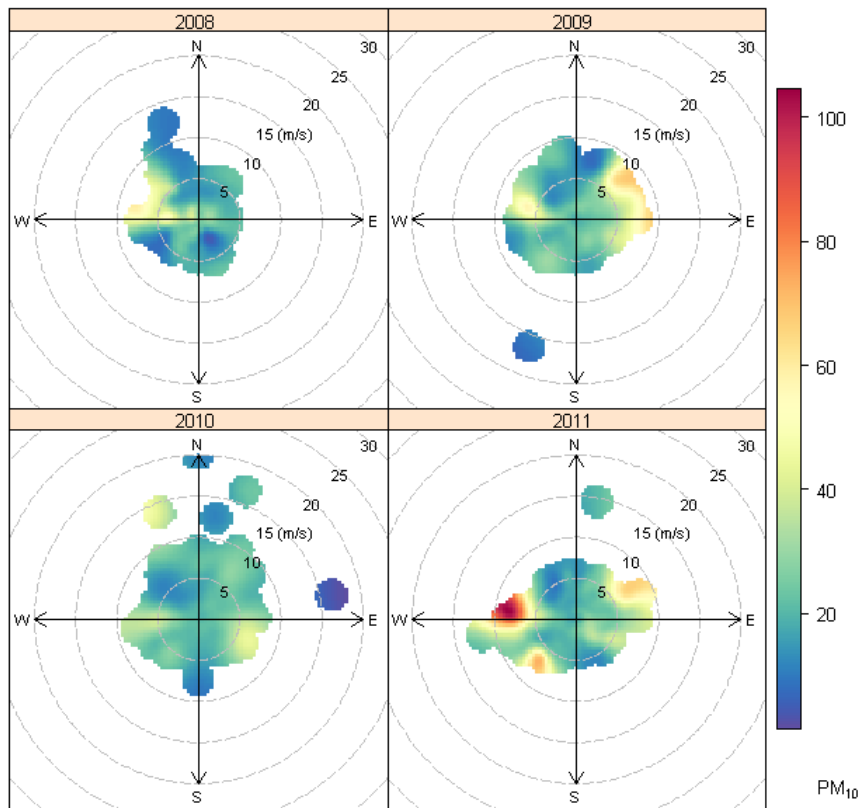
Year	PM ₁₀ Objective	Result (µg/m ³)	Compliant
2008 (from 17/11)	Annual mean <40µg/m ³	28.2µg/m ³	✓
2009	Annual mean <40µg/m ³	24.3µg/m ³	✓
2010	Annual mean <40µg/m ³	22.4µg/m ³	✓
2011 (until 17/11)	Annual mean <40µg/m ³	22.7µg/m ³	✓

South Ferriby PM2.5 Annual Mean Objective

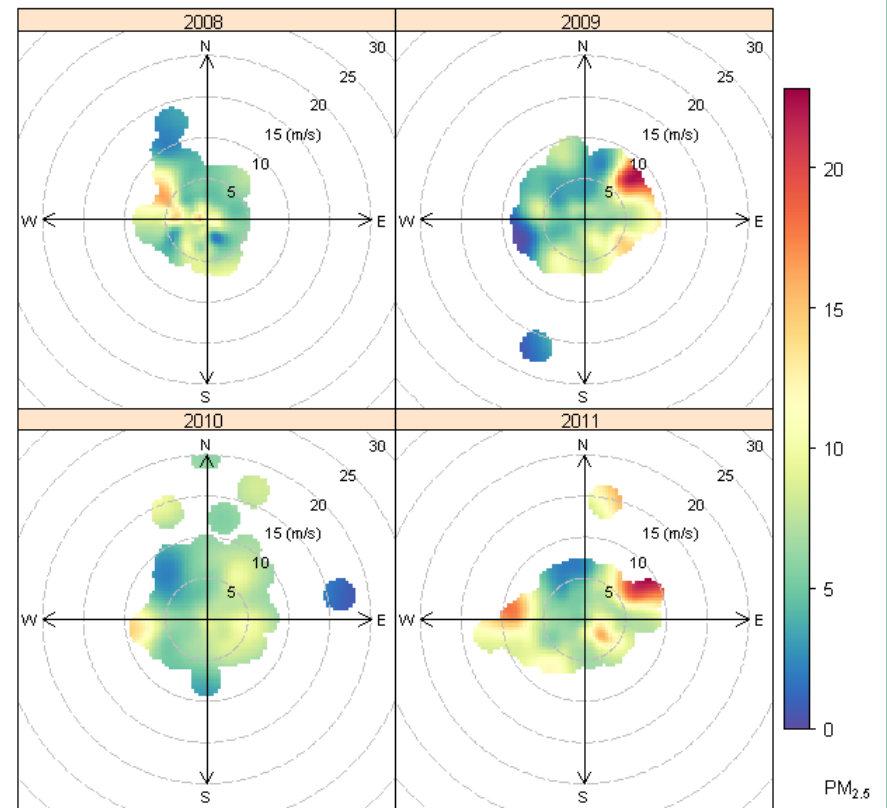


Year	PM _{2.5} Objective	Result (µg/m ³)	Compliant
2008 (from 17/11)	Annual mean <25µg/m ³	8.4µg/m ³	✓
2009	Annual mean <25µg/m ³	6.3µg/m ³	✓
2010	Annual mean <25µg/m ³	7.1µg/m ³	✓
2011 (until 17/11)	Annual mean <25µg/m ³	7.4µg/m ³	✓

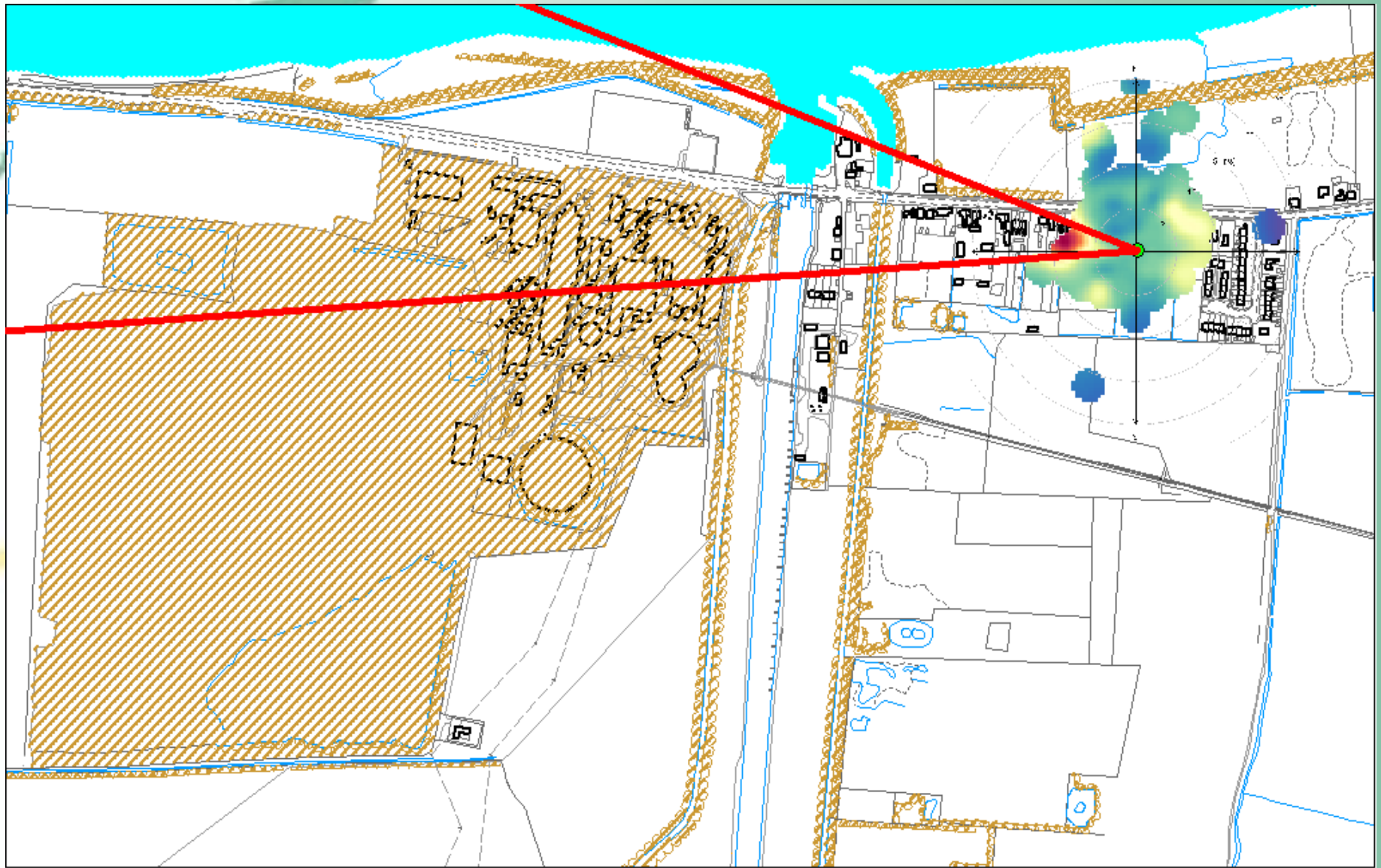
South Ferriby PM₁₀ by year



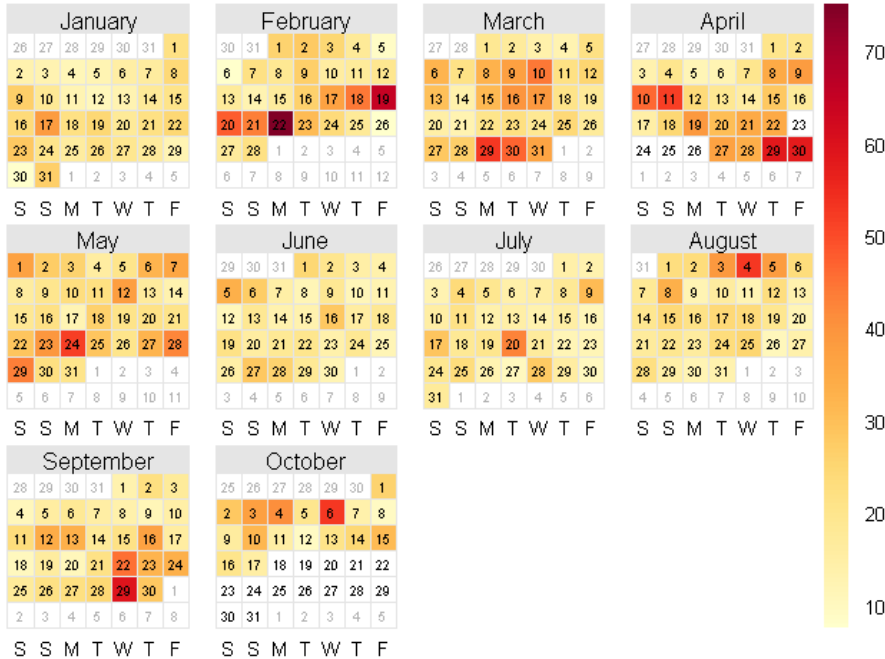
South Ferriby PM_{2.5} by year



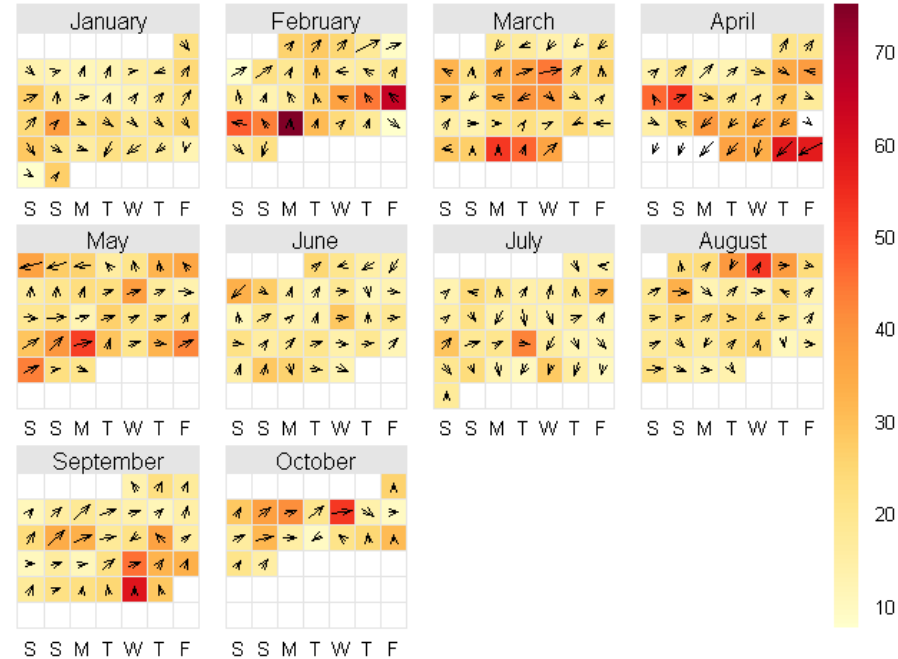
- Significant hotspots in 2011 data over previous years.
- These hotspots may be reduced in the last few months in 2011.
- Ratification and scaling following calibrations may also reduce the overall results.
- Overall the plots follow the same pattern.
- Definite higher concentrations during winds from the West. Source to be decided.
- Higher concentrations during periods of East winds most likely domestic fuel use.



PM₁₀ in 2011

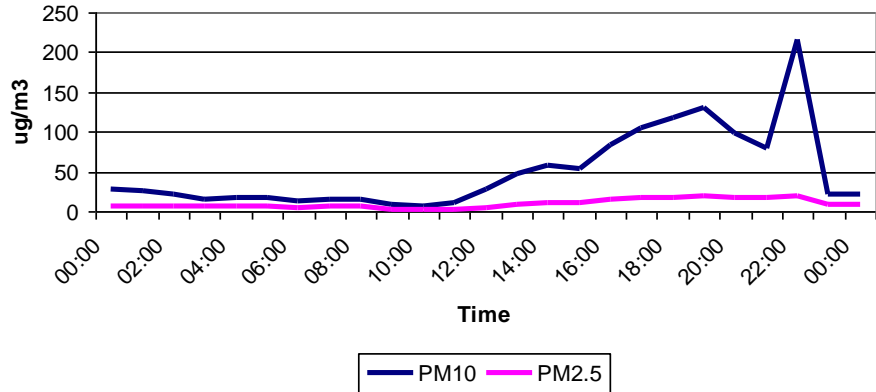


PM₁₀ in 2011

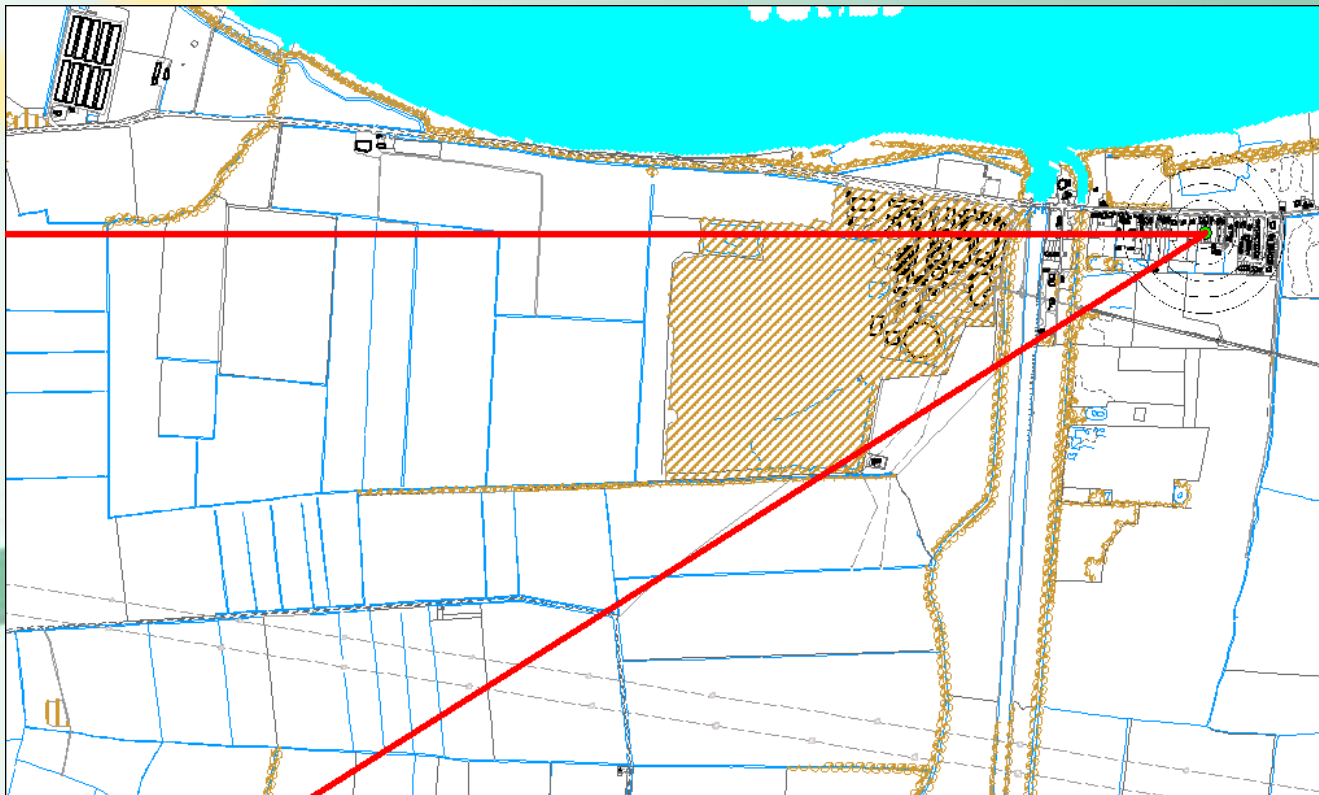
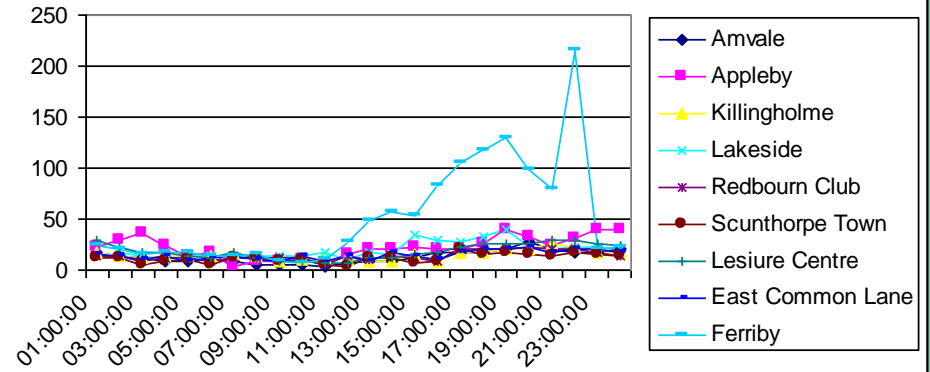


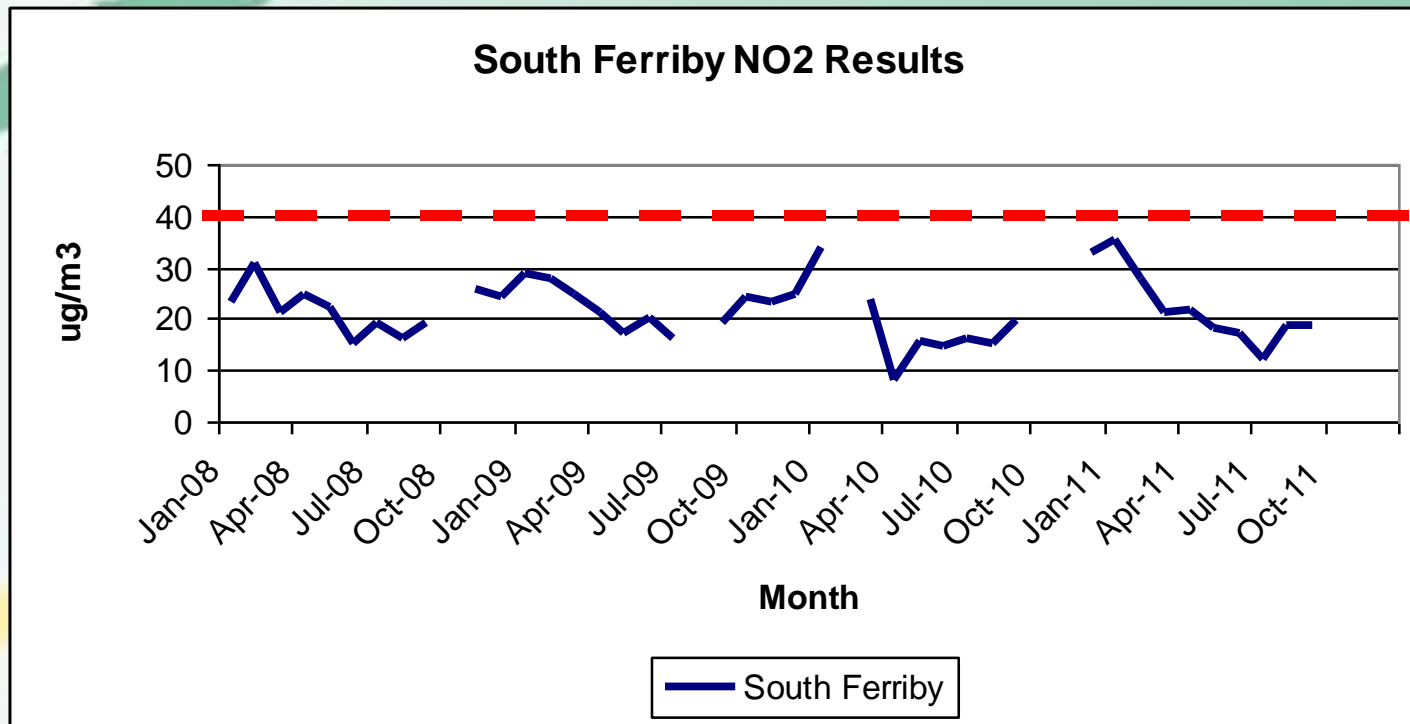
- February, March and April have been the worst months for daily mean concentrations this year.
- The summer months have not been subject to the high numbers of exceedance days recorded in previous years.
- A number of regional events have been recorded this year where pollution events have covered the UK.
- These type of events have been associated with 6 exceedance days at stations within Scunthorpe.
- The calendar plots again prove that not one source is responsible for exceedances within South Ferriby and wind from a number of directions can bring with it pollution.

28th May 2011



North Lincs Ambient Sites





- NO2 results have remained well within the objective since the last meeting.
- Following a review of the current NO2 network it has been decided that the South Ferriby NO2 tube will be removed.
- The likelihood of exceedance is assessed on an annual basis via the review and assessment process.
- Should there be a significant change in traffic on the A1077 this will be picked up.
- Consideration will then be given to a redeployment of the tube.

- North Lincolnshire Council have not received any nuisance dust complaints since the last meeting.
- NLC received a complaint regarding trade waste burning within South Ferriby. This is being investigated.
- If residents witness nuisance dust please call the Environmental Protection Team on (01724) 297830.
- Osiris continues to work well and collect useful data. It also helps in the identification of regional events.
- It will be removed for 2 weeks in November for calibration